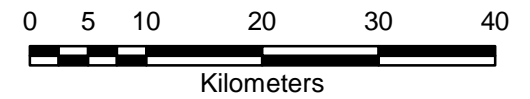


South West Region Indicative Prescribed Burn Program Autumn and Spring 2010

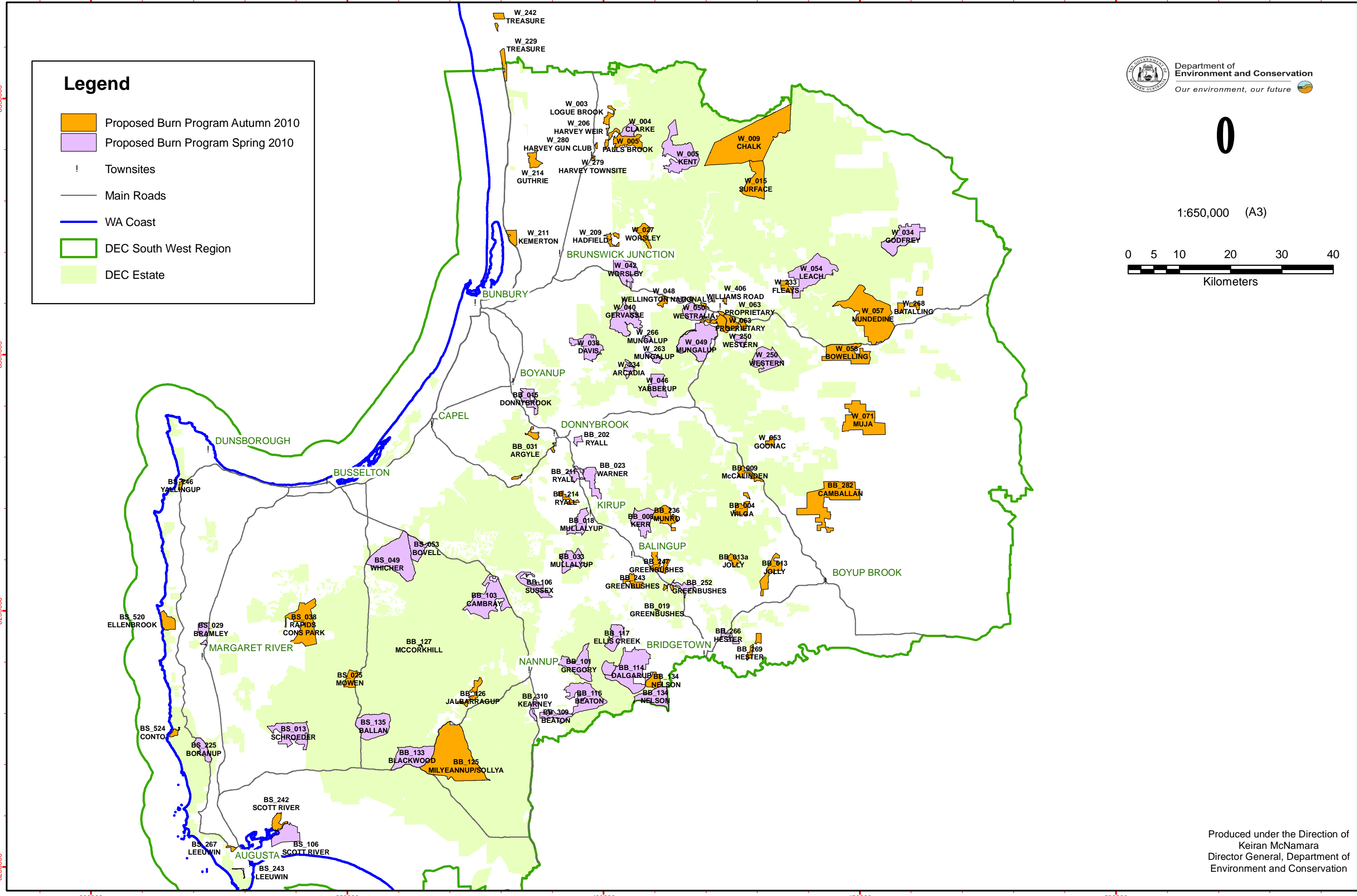


1:650,000 (A3)



Legend

- Proposed Burn Program Autumn 2010
- Proposed Burn Program Spring 2010
- ! Townsites
- Main Roads
- WA Coast
- DEC South West Region
- DEC Estate



Produced under the Direction of
Keiran McNamara
Director General, Department of
Environment and Conservation

Grid shown at 50000 metre intervals

Projection: Universal Transverse Mercator
MGA Zone 50. Datum: GDA94

The Dept. of Environment and Conservation does not guarantee that this map is without flaw of any kind and disclaims all liability for any errors, loss or other consequence which may arise from relying on any information depicted